

If you wish to pre-register for any class, please contact Nada Harris at nadah@att.net. See you at the Show!!!



JITTERBUG BRACELET

The Jitterbug Bracelet is a quick and easy right angle weave pattern original design by Arlene Reller. It uses 6mm firepolish beads, and size 6 and 8 seed beads. The pattern includes a clever beaded closure.

INSTRUCTOR: AnnMarie Midle

CLASS SCHEDULE: Friday, May 15th from 1pm-4pm

CLASS DURATION: 2-3 Hours (The bracelet may not be completed in class, but written instructions and all needed information will be shared with participants)

CLASS COST: \$25 Class size limit of 6.

SKILL LEVEL: Beginning to Intermediate

SUPPLIES: Kits will be available at the class. Thread (Fireline) will be provided. Participants will need to bring a needle and scissors. A thread puller is needed and recommended. They will be available at the Wild West Bead Society's booth located at the entrance to the show.



Austrian Crystal Royale

This netted bracelet has sparkling Swarovski Crystals woven through it, and Swarovski cubes to accent the center and ends of this spectacular piece.

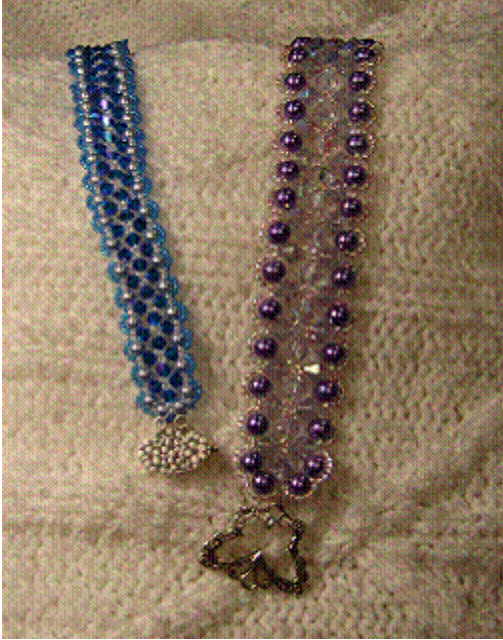
Instructor is Carol Green.

Class time is Saturday, May 16th from 1pm – 4pm.

Class cost is \$30. Class size limit of 6.

Kits for this class will be available in a choice of colors.

A thread puller is needed and recommended. They will be available at the Wild West Bead Society's booth located at the entrance to the show.



Scalloped Bracelet

A lacey combination of crystals and pearls make this bracelet a gorgeous piece.

Instructor: Diana Winship

Class time is Saturday, May 16th from 10am – 1pm.

Class cost is \$30. Class size limit of 6.

Kits for this class will be available in a choice of colors.

A thread puller is needed and recommended. They will be available at the Wild West Bead Society's booth located at the entrance to the show.



Bling Bangle

Right Angle Weave with firepolish beads and Swarovski Crystals makes a classy version of a bangle bracelet.

Instructor is Carol Green.

Class time is Sunday, May 17th from 10am – 1pm.

Class cost is \$30. Class size limit of 6.

Kits for this class will be available in a choice of colors.

A thread puller is needed and recommended. They will be available at the Wild West Bead Society's booth located at the entrance to the show.



Caged Bead Bracelet and the Swan Clasp.

Instructor: Betty Leeper

Class cost \$30 Class limit 6 students.

Class times are Friday and Sunday 10am-1pm

Kits for this class will be available for \$15

The caged bead bracelet uses 18 ga wire. I will provide kits that will include connecting jump rings and wire. I will have a selection of clasps as well. As an added bonus, I will also teach the students how to make the Swan style clasp. This class will be a Make and Take project.

Materials used: 9 to 12 6mm beads or crystals, 60" (approx) 18 gauge wire, 10 to 13 jump rings.

Tools needed: 2 pair of either flat nose or bent nose pliers, 1 pair of round nose pliers, 1 wire cutters, Polishing cloth – optional



Queen's Crown

A woven blanket of crystals and pearls to make any wrist beautiful.

Instructor: Diana Winship

Class time is Sunday, May 17th from 1pm – 4pm.

Class cost is \$30. Class size limit of 6.

Kits for this class will be available in a choice of colors.

A thread puller is needed and recommended. They will be available at the Wild West Bead Society's booth located at the entrance to the show.